

# SKINZ®



# SKINZ<sup>®</sup>



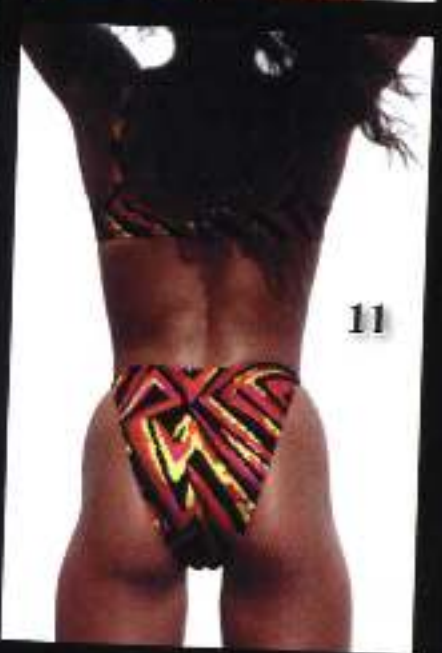
10



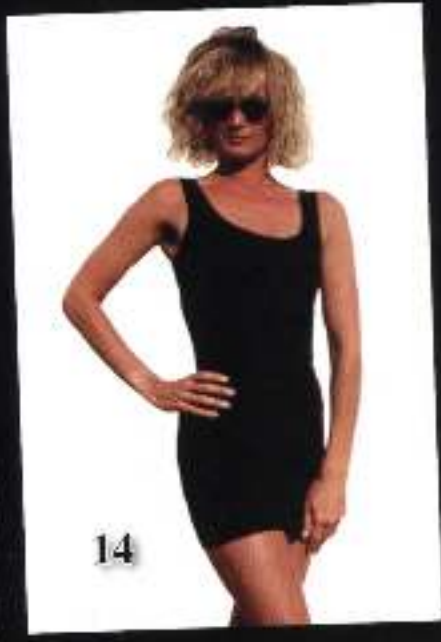
13



16



11



14



17



12



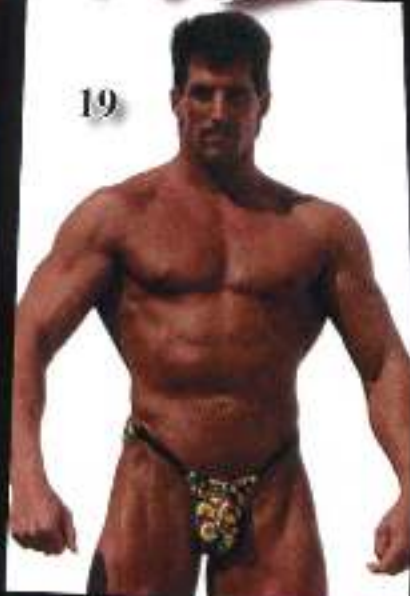
15



18

# SKINZ®

19



22



25



26



23



20



27



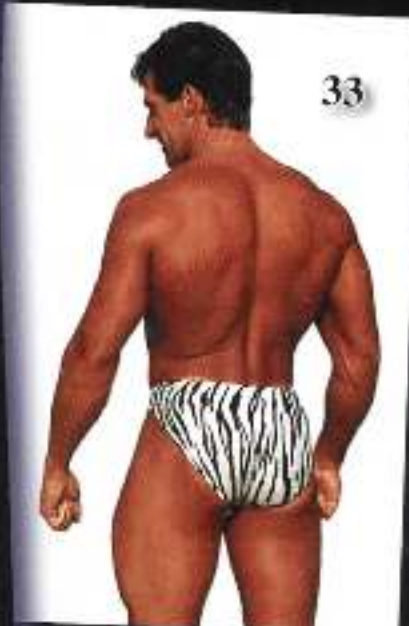
24



21



# SKINZ®





# SKIN<sup>®</sup> Softwear

841 Cleveland Street • Phone (813) 441-8789 • Clearwater, Florida 34615 • FAX (813) 442-2476

## 1995 Color Guide

### Female Shots:

No.	Product Name	Pattern/Color Number & Name
1.	Triangle Top (T) String Thong Bottom (BST4)	#801 Silver Satin
2.	Triangle Top (T) Strap Brazilian Bottom (BP4)	#007 Wet Black
3.	Halter Underwire Wonder (TEH) String Bikini Bottom (BSB)	#115 White Stars on Blue #106 Red & White Stripes
4.	Triangle Top (T) Adjustable Rio Bottom (BSB)	#008 Wet Red
5.	Pretzel Thong (PT)	#173 Red/White/Blue Waves
6.	Halter Underwire Wonder (TEH) Thong Bottom (BU4)	#102 Bala Bala
7.	Underwire Wonder (TE4) Moderate Cut Bottom (BF5) Sarong Skirt (MSS)	#161 Orange/Purple Passion
8.	Triangle Top (T) Brazilian Bottom (BB4)	#402 Gold Iridescent
9.	Underwire Top (TK) Rio Bottom (BR4)	#103 Daisy
10.	One Piece Thong (OT)	#108 Tahitian Floral
11.	Brazilian Bottom (BB4)	#800 Gold Satin
12.	Rio Bottom (BR4)	#003 Wet Royal Blue
13.	Sport Halter Top (HT4) Short Shorts (HP5)	#360 Jamaican Stripes C/L
14.	Tank Mini Dress (DT5)	#307 Black C/L
15.	Paneled Sport Halter (HU) Short Shorts (HP5)	#725 Navy Mini/Micro Stripes C/L
16.	Sport Halter (HT4) Short Shorts (HP5)	#722 Red/Grey/Black Tri Stripe C/L
17.	Jumper (JS)	#007 Wet Black
18.	Turtleneck Keyhole Thong Leopard (TLT) Short Shorts (HP5)	#347 Stewart Plaid #338 Red C/L

### Male Shots:

No.	Product Name	Pattern/Color Number & Name
19.	Brief (MB)	#110 Lime Amazon
20.	Posing Suit/Bikini (MS)	#021 Wet Yellow
21.	International Brief (MI)	#155 Neon Brush Strokes
22.	Brief (MB)	#005 Tiger
23.	Adjustable String Thong (MGST)	#400 Red Iridescent
24.	Adjustable Rio (MRG)	#008 Wet Red
25.	Rio (MR)	#401 Green Iridescent
26.	Posing Suit/Bikini (MS)	#162 Black Fire #007 Wet Black Straps
27.	International Brief (MI)	#185 Cracked Ice
28.	Rio (MR)	#006 Cobra
29.	Australian Boxer (MA4)	#163 Cold Fire
30.	International Brief (MI)	#104 Red Aztec
31.	Australian Boxer (MA4)	#109 RIZZ
32.	Singlet (SM)	#366 Zebra C/L
33.	Short Shorts (HP5)	#721 Black/Gray/White Tri Stripe C/L
34.	Workout Tank (CCT) Short Shorts (HP5)	#300 White #709 Red & White Stripe C/L
35.	Workout String Tank (GT4) Short Shorts (HP5)	#307 Black C/L #720 Quad Stripe
36.	Short Shorts (HP5)	#106 & #115 Stars & Stripes Combo



Crafted  
With Pride  
in U.S.A.



Order Form

841 Cleveland Street • Phone (813) 441-8789 • Clearwater, Florida 34615 • FAX (813) 442-2476

Before you begin your order please be aware that all of our styles are available in any of the prints and colors listed. Just because you don't see a particular item in the color you want, don't worry, we will make it for you. You tell us: what you want, in what color and what size. We aim to make you happy!

### Sizing

Mens waist: SM = 26-30, MD = 30-32, LG = 33-35, XL = 36-40, XXL = Big!

Womens equivalents: 1/3 = XS, 5/7 = SM, 9-11 = MD, 11/15 = LG.

Tall women may order full body pieces in a "long torso" version (1" added).

### Special Cuts

You can send us suits to be copied. There is a \$10 charge to copy each piece. We keep on file your "pattern". This is a one time charge. Special cuts are not returnable, except for alterations.

### Payment

We accept: VISA, Mastercard, Discover, American Express and cashier checks.

If you send us a personal check, we will wait till it clears before we begin your order, this can delay things up to 10 days. Standard shipping and handling for a pound or less is \$6.00 to anywhere in the 48 states. We ship UPS to street addresses and U.S. Mail to P.O. Boxes. Call for rates to more distant sites, or foreign countries.

### Choices

Try to give us a first and second choice on fabrics, so as not to delay your order.

Item #1	Color	2nd Choice	Size	Price \$	_____
Item #2	Color	2nd Choice	Size	Price \$	_____
Item #3	Color	2nd Choice	Size	Price \$	_____
Item #4	Color	2nd Choice	Size	Price \$	_____
Item #5	Color	2nd Choice	Size	Price \$	_____



Sub-Total \$ \_\_\_\_\_

Tax \$ \_\_\_\_\_

Shipping \$         \$6.00        

Red/Blue Shipping \$ \_\_\_\_\_

Rush Sewing \$ \_\_\_\_\_

Total Enclosed \$ \_\_\_\_\_

Name \_\_\_\_\_

Street Address \_\_\_\_\_

City \_\_\_\_\_ State \_\_\_\_\_ Zip \_\_\_\_\_

**RUSH**

24 Hour Rush Add \$10  
 48 Hour Rush Add \$5  
 UPS Red Add \$10  
 UPS Blue Add \$5



Crafted With Pride in U.S.A.

Check One:

VISA  Mastercard  Discover  American Express

Number: \_\_\_\_\_

Expiration Date: \_\_\_\_\_

Signature \_\_\_\_\_

Made in U.S.A.